

## EXECUTIVE SUMMARY

The 2018 update to the Allegany County Hazard Mitigation Plan (HMP) was prepared in accordance with the Disaster Mitigation Act of 2000 (DMA 2000). DMA 2000 requires states and local governments to prepare HMPs to remain eligible to receive pre-disaster mitigation grant funds available in the wake of federally declared disasters. **To restate, municipalities that do not participate in this process and do not adopt the resulting HMP will not be eligible to receive future pre-disaster mitigation grant funding (Section 404 grant funds).** Importantly, pre-disaster mitigation grant funds are separate and distinct from federal and state funds available for direct post-disaster relief (i.e., Public Assistance [PA] and Individual Assistance [IA]). Availability of those funds remains unchanged: if a federally declared disaster occurs in Allegany County, affected municipalities will still receive immediate recovery assistance regardless of their participation in this HMP. However, DMA 2000 improves the disaster planning process by (1) increasing requirements for hazard mitigation planning, and (2) necessitating that participating municipalities document their hazard mitigation planning process and identify hazards, potential losses, and mitigation needs, goals, and strategies.

**Hazard Mitigation** is any sustained action taken to reduce or eliminate long-term risk and effects that can result from specific hazards.

FEMA defines a **Hazard Mitigation Plan** as documentation of a state or local government's evaluation of natural hazards and strategy to mitigate such hazards.

### Allegany County Multi-Jurisdictional Planning Process

Allegany County developed and adopted the Allegany County HMP in 2011. DMA 2000 regulations require that local plans be formally updated and adopted every five (5) years, reassessing risk and updating local strategies to manage and mitigate those risks. To comply, Allegany County and inclusive jurisdictions actively participated in the update of the HMP. Extensive outreach efforts by the Allegany County Office of Emergency Management and Fire (OEM) resulted in full participation from all municipalities. Upon completion and approval of the HMP, participating jurisdictions will continue to address and implement the findings and recommendations of this HMP.

Table ES-1 lists local governments that actively participated in the HMP update process to achieve or maintain their compliance with DMA 2000 requirements.

**Table ES-1. Participating Jurisdictions in the 2018 Allegany County HMP Update**

Jurisdictions			
Allegany County	Town of Angelica	Town of Centerville	Town of New Hudson
Town of Alfred	Village of Angelica	Town of Clarksville	Village of Richburg
Village of Alfred	Town of Belfast	Town of Cuba	Town of Rushford
Town of Allen	Village of Belmont	Village of Cuba	Town of Scio
Town of Alma	Town of Birdsall	Town of Friendship	Town of Ward
Town of Almond	Town of Bolivar	Town of Genesee	Town of Wellsville
Village of Almond	Village of Bolivar	Town of Granger	Village of Wellsville
Town of Amity	Town of Burns	Town of Grove	Town of West Almond
Town of Andover	Village of Canaseraga	Town of Hume	Town of Willing
Village of Andover	Town of Caneadea	Town of Independence	Town of Wirt



During this HMP update process, Allegany County and the participating jurisdictions accomplished the following:

- Developed a steering committee (Hazard Mitigation Team) and planning partnership
- Reviewed and updated the hazards of concern
- Profiled and prioritized these hazards
- Estimated inventory at risk and potential losses associated with these hazards
- Reviewed and updated hazard mitigation goals and objectives
- Reviewed and updated County and local mitigation strategies to address identified risks and vulnerabilities
- Updated and developed maintenance procedures to be executed upon approval of the HMP.

As required by DMA 2000, the participating jurisdictions and Allegany County have informed the public about HMP update efforts and have provided opportunities for public comment and input regarding the planning process. In addition, numerous agencies and stakeholders have participated as core or support members to provide input and expertise to the planning process. This HMP documents the process and outcomes of the jurisdictions' mitigation planning efforts.

Allegany County and the participating jurisdictions incorporate mitigation planning as an integral component of daily government operations through existing processes and programs. Announcements regarding the planning process were publicized via public notice and on the Allegany County HMP website (<http://www.alleganycountyhmp.com>). The website also offered the general public and stakeholder groups an opportunity to provide their input through a community survey. Updates to the HMP will be similarly announced after annual plan reviews and 5-year updates. The questionnaire asked quantifiable questions about citizen perception of risk, knowledge of mitigation, and support of community programs. The County HMP Coordinator at the Allegany County Planning Department and local planning partnership representatives will be responsible for receiving, tracking, and filing public comments regarding this HMP.

### **Allegany County Hazard Mitigation Plan Adoption**

Once the Federal Emergency Management Agency (FEMA) formally approves this HMP update, Allegany County and all participating jurisdictions will be required to formally adopt the updated HMP. A sample copy of an adoption resolution is in Appendix A.

### **Allegany County Profile**

According to 2010 U.S. Census data, Allegany County had an estimated population of 48,946. Allegany County includes rural landscapes, residential areas, business districts, commercial and industrial areas, various transportation systems (local and state roadways, railway, etc.), and various terrains and natural features. The Genesee River flows north through the center of the County, emptying into Lake Ontario. The County's combination of natural and developed features expose it and render it vulnerable to impacts of hazard events.

The HMP provides a general overview of current and anticipated population and land use within the County. This information provides a basis for decisions about types of mitigation approaches to consider and locations at which to apply

Development increases population and structures; therefore, development can increase impacts of hazards on a community. For example, heavy development planned for a flood-prone area would likely increase the impact of a flood event in that area.



these approaches. Anticipated population and land use information can also be used to support decisions regarding future development in vulnerable areas. The County and jurisdictions can plan ahead to mitigate increases in vulnerabilities early in the development process or can shift development to areas of lower risk. The Planning Partnership will revisit the HMP regularly to: (1) ensure that mitigation actions support sustainability and minimize increased risk, and (2) support implementation and targeting of specific mitigation actions to address potential impacts of development over time.

## Risk Assessment

A key component of an HMP is accurate identification of risks posed by hazards and corresponding impacts on the community. The process of identifying hazards of concern, profiling hazard events, and conducting a vulnerability assessment is known as a risk assessment. The risk assessment portion of the mitigation planning process included the steps shown on Figure ES-1. Each step is summarized below.

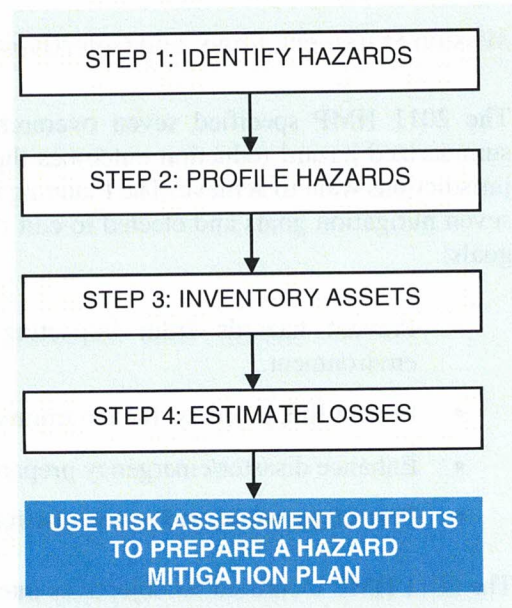
*Step 1:* Identify hazards of concern. Allegany County considered the full range of natural and non-natural hazards that could impact the County, and then identified and ranked hazards of greatest concern. The following list of 13 hazards of concern was selected for further evaluation in the HMP:

- Dam Failure
- Drought
- Earthquake
- Flood
- Hazardous Materials
- Landslide
- Levee Failure
- Pandemic Disease
- Severe Storm
- Severe Winter Storm
- Terrorism
- Utility Failure
- Wildfire

*Step 2:* Prepare a profile of each hazard of concern. These profiles assist communities in evaluating and comparing hazards that can impact their areas. Each type of hazard has unique characteristics that vary from event to event. That is, impacts associated with a specific hazard can vary depending on the magnitude and location of each event (a hazard event is a specific, uninterrupted occurrence of a particular type of hazard). Further, probability of occurrence of a hazard at a given location affects the priority assigned to that hazard. Finally, each hazard impacts different communities in different ways, depending on geography, local development, population distribution, age of buildings, and mitigation measures already implemented.

*Steps 3 and 4:* Evaluate community assets and identify assets exposed or vulnerable to the identified hazards of concern. Hazard profile information combined with data regarding population, demographics, general building stock, and critical facilities at risk prepares the community to develop risk scenarios and estimate potential damages and losses from each hazard.

Figure ES-1. Risk Assessment Process





Overall vulnerability of Allegany County to the hazards of concern cannot be underestimated. Frequent severe storms result in wind damage and flooding that affect residents, businesses, and government services. National Flood Insurance Program (NFIP) statistics for the County, as of May 31, 2016, identify approximately 400 NFIP policies in force, insuring over \$38.4 million in property, with total premiums of \$319,000 annually, and paid claims since 1978 of over \$630,000.

## **Allegany County Mitigation Strategy**

Outcomes of the risk assessment, supplemented by community input, provided a basis for reviewing past mitigation actions, future goals, and appropriate local mitigation actions.

### **Mission Statement, Goals, and Objectives**

The 2011 HMP specified seven overarching mitigation goals that summarized hazard reduction outcomes the County and participating jurisdictions want to achieve. The Planning Partnership reviewed those seven mitigation goals and elected to edit them to the four mitigation goals:

- Prevent hazards from impacting life, property, and the environment.
- Protect life, property, the environment, and the economy from hazard impacts.
- Enhance disaster/emergency preparedness within the community.
- Protect, preserve, and restore the functions of natural systems.

The mitigation strategy portion of the HMP includes:

- A summary of past and current mitigation efforts
- Local hazard mitigation goals and objectives
- Identification and analysis of mitigation measures and projects under consideration
- Multi-jurisdictional mitigation strategy (goals and objectives)
- Mitigation action plan (summary of specific actions)

The 2011 HMP identified 33 objectives intended to meet the seven goals of 2011. Those goals, along with their corresponding objectives, guided identification, evaluation, and prioritization of specific mitigation actions. After review of the 2011 objectives, the Planning Partnership developed a set of nine objectives that align more closely with the four updated goals.

### **Capability Assessment**

Capability assessments were prepared by Allegany County and each participating jurisdiction. A capability assessment is an inventory of a community's missions, programs, and policies and an analysis of its capacity to implement them. This assessment is an integral part of the planning process. The capability assessment process includes identification, review, and analysis of current local and state programs, policies, regulations, funding, and practices that may either facilitate or hinder mitigation.

By completing these assessments, Allegany County and participating jurisdictions learned how or whether they would be able to implement certain mitigation actions by determining the following:

- Types of mitigation actions that may be prohibited by law
- Limitations that may hinder mitigation actions
- The range of local and/or state administrative, programmatic, regulatory, financial, and technical resources available to assist in implementing their mitigation actions



## Identification, Prioritization, Analysis, and Implementation of Mitigation Actions

Allegany County has seen much success in the implementation of the 2011 HMP, particularly actions that integrate hazard mitigation into jurisdictions' daily operations.

As part of the planning process for this HMP update, all participating jurisdictions evaluated their risks and known or anticipated losses to the hazards of concern, assessed their capabilities to manage hazard risk, reviewed progress on past mitigation efforts, and identified a comprehensive range of mitigation alternatives and actions they endeavor to implement as resources are identified and available. The HMP identifies all proposed mitigation actions relevant to achievement of the goals and objectives presented above. The County and participating jurisdictions have identified appropriate local mitigation actions along with hazards mitigated, goals and objectives met, lead agencies, estimated costs, potential funding sources, and proposed timeline. These actions are identified in Volume II, Section 9 for the County and each participating jurisdiction.

## Plan Maintenance Procedures

Hazard mitigation planning is an ongoing process. Section 7 of this plan presents procedures for HMP maintenance and updates. The Planning Partnership will continue ongoing mitigation efforts to implement the HMP and revise and update the HMP as necessary.

To monitor implementation of the HMP, Planning Partnership members will meet annually to discuss the status of HMP implementation and will prepare a report summarizing the status of the HMP and any needed updates. The mitigation evaluation will address changes as new hazard events occur, as the area develops, and as more is learned about hazards and their impacts. The evaluation will include an assessment of whether the planning process and actions have been effective, whether development or other issues warrant changes to the HMP or its priorities, progress toward achievement of the communities' goals, and whether changes are warranted. The HMP will be updated at a minimum within the 5-year cycle specified by DMA 2000.

## Point of Contact

To request information or provide comments regarding this HMP, please contact the Allegany County Planning Department:

Mailing Address: Allegany County Planning Department  
Crossroads Center  
6087 NYS Route 19N  
Belmont, NY 14813

Contact Name: Mr. Kier Dirlam, Director

E-mail Address: [dirlamhk@alleganyco.com](mailto:dirlamhk@alleganyco.com)

Telephone: (585) 268-7472







## 9.26 TOWN OF GENESEE

This section presents the jurisdictional annex for the Town of Genesee for the Allegany County Hazard Mitigation Plan (HMP).

### 9.26.1 Hazard Mitigation Plan Point of Contact

The individuals listed below have been identified as the HMP's primary and alternate points of contact:

Primary Point of Contact	Alternate Point of Contact
Donald Jordan, Town Supervisor P.O. Box 40, Little Genesee, NY 14754 (585) 928-2178 ext. 2 townsupervisor@townofgenesee.com	Ben Reynolds, Highway Superintendent P.O. Box 40, Little Genesee, NY 14754 (585) 928-1578 townofgenesee@gmail.com

### 9.26.2 Municipal Profile

The Town of Genesee is located in the southwest corner of Allegany County. It covers a total area of 36.3 square miles and according to the U.S. Census, the Town's population was 1,693 in 2010. The Town was first settled around 1823 and was established in 1830 from a portion of the Town of Cuba. Genesee is bordered to the north by the Town of Clarksville, to the east by the Town of Bolivar, to the south by Pennsylvania, and to the west by Cattaraugus County. New York State Route 417 is an important highway that runs east-west through the Town. Little Genesee Creek flows through the southeast portion of the municipality. Two hamlets are found within the Town: Little Genesee and Ceres.

### Growth/Development Trends

Table 9.26-1 summarizes recent residential and commercial development since 2010 to the present, and any known or anticipated major residential or commercial development and major infrastructure development for the next five (5) years. The maps in Section 9.26.8 of this annex illustrate the landslide, flood, and wildfire hazard areas within the Town of Genesee.

**Table 9.26-1. Growth and Development**

Property or Development Name	Type (e.g., Residential, Commercial)	# of Units / Structures	Location (address and/or Parcel ID)	Known Hazard Zones	Description/Status of Development
<b>Recent Development from 2010 to present</b>					
None identified					
<b>Known or Anticipated Development in the Next five (5) years</b>					
None identified					

\* Only location-specific hazard zones or vulnerabilities are considered.

### 9.26.3 Natural Hazard Event History Specific to the Municipality

Allegany County has a history of natural and non-natural hazards as detailed in Volume I, Section 5.0 of this plan. A summary of historical events is in each of the hazard profiles and includes a chronology of events that affected the County and its municipalities. For this plan update, to the extent possible, all events that occurred in the County were summarized to indicate the range and impact of hazards in the community. Information regarding specific damages is included in Table 9.26-2, if available, based on reference material or local sources. Details of these and additional events are included in Volume I, Section 5.0 of this plan.



Table 9.26-2. Hazard Event History

Dates of Event	Event Type	FEMA Declaration # (If Applicable)	County Designated?	Summary of Damages/Losses
April 26-May 8, 2011	Severe Storms, Flooding, Tornadoes, and Straight-Line Winds	DR-1993	Yes	Washed out 6-foot culvert at Wolf Creek Road. Surface and shoulder washout at Butternut Brook Road. Washout of 3-foot culvert at Bells Brook Road.

Note: FEMA Federal Emergency Management Agency

## 9.26.4 Hazard Vulnerabilities and Ranking

The hazard profiles in Section 5.0 of this plan have detailed information regarding each plan participant's vulnerability to the identified hazards. The following section summarizes the hazard vulnerabilities and their ranking for the Town of Genesee. For additional vulnerability information relevant to this jurisdiction, refer to Section 5.0.

### Hazard Risk/Vulnerability Risk Ranking

The Table 9.26-3 summarizes the hazard risk/vulnerability rankings of potential hazards for the Town of Genesee. The hazards of concern for the Town are dam failure, drought, flood, landslide, levee failure, severe storm, severe winter storm, wildfire, hazardous materials, pandemic disease, and utility failure.

Table 9.26-3. Hazard Risk/Vulnerability Risk Ranking

Hazard Type	Estimate of Potential Dollar Losses to Structures Vulnerable to the Hazard <sup>a, c</sup>	Probability of Occurrence	Risk Ranking Score (Probability x Impact)	Hazard Ranking <sup>b</sup>
Dam Failure	Damage estimate not available	Rare	6	Low
Drought	Damage estimate not available	Frequent	39	High
Earthquake	RCV Exposed to NEHRP D&E Soils \$157,076,299	Frequent	48	High
Flood	1 percent Annual Chance: \$13,679,714	Frequent	18	Medium
Landslide	RCV Exposed to Landslide Hazard Areas: \$366,236,051	Occasional	36	High
Levee Failure	Damage estimate not available	Rare	6	Low
Severe Storm	100-year MRP: \$0.00 500-year MRP: \$4,038 Annualized: \$0.00	Frequent	48	High
Severe Winter Storm	1 percent GBS: \$2,391,761 5 percent GBS: \$11,958,805	Frequent	51	High
Wildfire	Estimated RCV in WUI Hazard Area \$287,430,928	Occasional	36	High
Hazardous Materials	Damage estimate not available	Frequent	36	High
Pandemic Disease	Damage estimate not available	Frequent	36	High
Terrorism	Damage estimate not available	Rare	18	Medium
Utility Failure	Damage estimate not available	Frequent	42	High

a. Building damage ratio estimates are based on FEMA 386-2 (August 2001).

b. The valuation of general building stock and loss estimates was based on custom inventory for the municipality.

High = Total hazard priority risk ranking score of 31 and above

Medium = Total hazard priority risk ranking of 15-30

Low = Total hazard risk ranking below 15

c. Loss estimates for the severe storm and severe winter storm hazards are structural values only and do not include the value of contents.



**Notes:**

Loss estimates for the flood and earthquake hazards represent both structure and contents.

The HAZUS-MH earthquake model results are reported by Census Tract.

GBS General building stock

MRP Mean return period

NEHRP National Earthquake Hazards Reduction Program

RCV Replacement Cost Value

WUI Wildland-urban interface

## National Flood Insurance Program Summary

Table 9.26-4 summarizes the National Flood Insurance Program (NFIP) statistics for the Town of Genesee.

**Table 9.26-4. NFIP Summary**

Municipality	# Policies (1)	# Claims (Losses) (1)	Total Loss Payments (2)	# Rep. Loss Prop. (1)	# Severe Rep. Loss Prop. (1)	# Policies in 100-year Boundary (3)
Genesee (T)	0	2	\$9,014	0	0	0

Source: FEMA Region 2 2016.

(1) Policies, claims, RL, and SRL statistics provided by FEMA Region 2, and are current as of May 31, 2016. Total number of RL properties does not include SRL properties. These numbers do not include the Seneca Nation. Number of claims represents claims closed by May 31, 2016.

(2) Total building and content losses from the claims file provided by FEMA Region 2.

(3) Number of policies inside and outside of flood zones is based on latitude and longitude coordinates provided by FEMA Region 2 in the policy file. FEMA noted that for a property with more than one entry, more than one policy may have been in force or more than one Geographic Information System (GIS) specification was possible. Number of policies and claims, and claims total, exclude properties outside Allegany County boundary, based on provided latitude and longitude coordinates.

## Critical Facilities

Table 9.26-5 presents FEMA Hazards U.S.–Multi Hazards (HAZUS-MH) estimates of the damage and loss of use to critical facilities in the community from a 1- and 0.2-percent annual chance flood.

**Table 9.26-5. Potential Flood Losses to Critical Facilities**

Name	Type	Exposure	
		1 percent Event	0.2 percent Event
None			

Source: Allegany County; HAZUS-MH 2.2; FEMA 2016

Notes HAZUS-MH 2.2 provides a general indication of the maximum restoration time for 100 percent operations. Clearly, a great deal of effort is needed to quickly restore essential facilities to full functionality; therefore, this will be an indication of the maximum downtime (HAZUS-MH 2.2 User Manual). In some cases, a facility may be in the DFIRM flood hazard boundary; however, HAZUS did not calculate potential loss. This may be because the depth of flooding does not amount to any damages to the structure according to the depth damage function used in HAZUS for that facility type. HAZUS-MH may estimate potential damage to a facility that is outside the DFIRM because the model generated a depth grid beyond the DFIRM boundaries.

NA Not available

X Facility located in the DFIRM boundary

- Not calculated by HAZUS-MH 2.2

## Other Vulnerabilities Identified

The jurisdiction has identified the following vulnerabilities within their community:

- None at this time



### 9.26.5 Capability Assessment

This section identifies the following capabilities of the Town of Genesee:

- Planning and regulatory capability
- Administrative and technical capability
- Fiscal capability
- Community classification
- National Flood Insurance Program (NFIP)
- Integration of Mitigation Planning into Existing and Future Planning Mechanisms

#### Planning and Regulatory Capability

Table 9.26-6 summarizes the regulatory tools available to the Town of Genesee.

**Table 9.26-6. Planning and Regulatory Tools**

Tool / Program (code, ordinance, plan)	Do you have this? (Yes/No) If Yes, date of adoption or update	Authority (local, county, state, federal)	Dept./ Agency Responsible	Code Citation and Comments (Code Chapter, name of plan, explanation of authority, etc.)
<b>Planning Capability</b>				
Master Plan	No			
Capital Improvements Plan	No			
Floodplain Management / Basin Plan	No			
Stormwater Management Plan	No			
Open Space Plan	No			
Stream Corridor Management Plan	No			
Watershed Management or Protection Plan	No			
Economic Development Plan	No			
Comprehensive Emergency Management Plan	No			
Emergency Response Plan	No			
Post-Disaster Recovery Plan	No			
Transportation Plan	No			
Strategic Recovery Planning Report	No			
Other Plans	No			
<b>Regulatory Capability</b>				
Building Code	Yes	State, Local	Code Enforcement Officer	Section 10, Municipal Home Rule Law; Local Law #3 of 2007
Zoning Ordinance	No			
Subdivision Ordinance	No			
NFIP Flood Damage Prevention Ordinance	Yes	Local	Town Supervisor	
NFIP: Cumulative Substantial Damages	No			



Tool / Program (code, ordinance, plan)	Do you have this? (Yes/No) If Yes, date of adoption or update	Authority (local, county, state, federal)	Dept./ Agency Responsible	Code Citation and Comments (Code Chapter, name of plan, explanation of authority, etc.)
NFIP: Freeboard	Yes	State, Local	Town Supervisor	State-mandated Base Flood Elevation (BFE) +2 for single and two-family residential construction; BFE+1 for all other construction types
Growth Management Ordinances	No			
Site Plan Review Requirements	No			
Stormwater Management Ordinance	No			
Municipal Separate Storm Sewer System (MS4)	No			
Natural Hazard Ordinance	No			
Post-Disaster Recovery Ordinance	No			
Real Estate Disclosure Requirement	Yes	State		New York State mandate, Property Condition Disclosure Act, NY Code - Article 14 §460-467
Other (Special Purpose Ordinances [i.e., sensitive areas, steep slope])	No			

### Administrative and Technical Capability

Table 9.26-7 summarizes potential staff and personnel resources available to the Town of Genesee.

**Table 9.26-7. Administrative and Technical Capabilities**

Resources	Is this in place? (Yes or No)	Department/ Agency/Position
<b>Administrative Capability</b>		
Planning Board	No	
Mitigation Planning Committee	No	
Environmental Board/Commission	No	
Open Space Board/Committee	No	
Economic Development Commission/Committee	No	
Maintenance Programs to Reduce Risk	No	
Mutual Aid Agreements	Yes	Towns, county, state, fire department
<b>Technical/Staffing Capability</b>		
Planners or engineers with knowledge of land development and land management practices	No	
Engineers or professionals trained in construction practices related to buildings or infrastructure	Yes	County
Planners or engineers with an understanding of natural hazards	No	
NFIP Floodplain Administrator	Yes	Town Supervisor
Surveyors	No	
Personnel skilled or trained in GIS and/or HAZUS-MH applications	No	



Resources	Is this in place? (Yes or No)	Department/ Agency/Position
Scientist familiar with natural hazards	No	
Emergency Manager	No	
Grant writers	No	
Staff with expertise or training in benefit/cost analysis	No	
Professionals trained in conducting damage assessments	No	

### Fiscal Capability

Table 9.26-8 summarizes financial resources available to the Town of Genesee.

**Table 9.26-8. Fiscal Capabilities**

Financial Resources	Accessible or Eligible to Use (Yes/No)
Community Development Block Grants (CDBG, CDBG-DR)	No
Capital Improvements Project Funding	Yes - Town Board
Authority to levy taxes for specific purposes	Yes- Town Board
User fees for water, sewer, gas or electric service	No
Impact Fees for homebuyers or developers of new development/homes	No
Stormwater Utility Fee	No
Incur debt through general obligation bonds	No
Incur debt through special tax bonds	No
Incur debt through private activity bonds	No
Withhold public expenditures in hazard-prone areas	No
Other federal or State funding programs	Yes - CHIPS
Open space acquisition funding programs	No
Other	None

### Community Classifications

Table 9.26-9 summarizes classifications for community programs available to the Town of Genesee.

**Table 9.26-9. Community Classifications**

Program	Do you have this? (Yes/No)	Classification (if applicable)	Date Classified (if applicable)
Community Rating System (CRS)	No	NP	NP
Building Code Effectiveness Grading Schedule (BCEGS)	No	NP	NP
Public Protection (Insurance Services Office [ISO] Fire Protection Classes 1 to 10)	Yes	N/A	N/A
Storm Ready	No	NP	NP
Firewise	No	NP	NP
Disaster/Safety Programs in/for Schools	No		
Organizations with Mitigation Focus (advocacy group, non-government)	No		



Program	Do you have this? (Yes/No)	Classification (if applicable)	Date Classified (if applicable)
Public Education Program/Outreach (through website, social media)	No		
Public-Private Partnerships	No		

N/A = Not applicable. NP = Not participating. - = Unavailable. TBD = To be determined.

The classifications in Table 9.26-9 relate to the community's ability to provide effective services to lessen its vulnerability to the hazards identified. These classifications can be viewed as a gauge of the community's capabilities in all phases of emergency management (preparedness, response, recovery and mitigation) and are used as an underwriting parameter for determining the costs of various forms of insurance. The CRS class applies to flood insurance while the BCEGS and Public Protection classifications apply to standard property insurance. CRS classifications range from 1 to 10 with class 1 being the best possible classification, and class 10 representing no classification benefit. Firewise classification is higher if the subject property is more than 1000 feet from a creditable fire hydrant and is within five (5) road miles of a recognized fire station.

Criteria for classification credits are in:

- The Community Rating System Coordinators Manual
- The Building Code Effectiveness Grading Schedule
- The ISO Mitigation online ISO's Public Protection website at <https://www.isomitigation.com/ppc/>
- The National Weather Service (NWS) Storm Ready website at <http://www.stormready.noaa.gov/index.html>
- The National Firewise Communities website at <http://firewise.org/>

### Self-Assessment of Capability

Table 9.26-10 has an approximate measure of the Town of Genesee's capability to work in a hazard-mitigation capacity or effectively implement hazard mitigation strategies to reduce hazard vulnerabilities.

**Table 9.26-10. Self-Assessment Capability for the Municipality**

Area	Degree of Hazard Mitigation Capability		
	Limited (If limited, what are your obstacles?)*	Moderate	High
Planning and Regulatory Capability	X - Too few people		
Administrative and Technical Capability	X - Too few people		
Fiscal Capability	X - Too few people		
Community Political Capability	X - Too few people		
Community Resiliency Capability	X - Too few people		
Capability to Integrate Mitigation into Municipal Processes and Activities	X - Too few people		

### National Flood Insurance Program

#### NFIP Floodplain Administrator

Donald Jordan, Town Supervisor



### Flood Vulnerability Summary

The Town does not maintain lists or inventories of properties that have been damaged by floods. During recent storm events (such as Floyd, Irene, and Sandy), no structures were damaged in the municipality, nor were substantial damage estimates made. There is currently no interest in mitigation (elevation or acquisition) at the time of this plan update.

### Resources

The Floodplain Administrator (FPA) is the sole person assuming the role and responsibilities of floodplain administration for the municipality. Education and outreach regarding flood hazards or risk, or flood risk reduction is not provided to the community. The FPA indicated that there are currently no barriers to running an effective floodplain management program; however, he does not feel adequately supported or trained to fulfill the role as the FPA. The FPA would consider attending continuing education and/or training on floodplain management if such opportunities were offered.

### Compliance History

The Town is currently in good standing with the NFIP, and the most recent compliance audit was conducted in 2011. The Town has not had a Community Assistance Visit.

### Regulatory

The Town's floodplain management ordinance meets the minimum set by FEMA and New York State. The Town does not have additional ordinances, plans, or programs that support floodplain management.

### Community Rating System

The Town of Genesee does not participate in the Community Rating System (CRS) program, nor would the municipality consider doing so in the future.

### Integration of Hazard Mitigation into Existing and Future Planning Mechanisms

For a community to succeed in reducing long-term risk, hazard mitigation must be integrated into the day-to-day local government operations. As part of this planning effort, each community was surveyed to obtain a better understanding of their community's progress in plan integration. A summary of survey results is provided below. The community identified specific integration activities that will be incorporated into municipal procedures.

### Planning

The Town identified the following as planning capabilities:

- Reviews local plans and efforts to ensure consistency with the County HMP
- Supports future HMP efforts

### Regulatory and Enforcement

The Town identified the following as regulatory and enforcement capabilities:

- Encourages development and enforcement of wind-resistant building sites and construction codes
- Identifies and updates existing land use in major stream corridors and floodplains
- Uses the New York State Department of Environmental Conservation's (NYSDEC) Stormwater Management Manual to minimize the impact of future land use changes



- Identifies appropriate protection measures for groundwater and public drinking water systems
- Ensures that property development that occurs within the floodplain areas is constructed to be flood proof, to the extent possible
- Limits (to the extent practicable) development within floodplain areas to avoid degradation of their capacity to control flood levels and reduce potential future losses due to flooding
- Wherever practicable, uses zoning and other growth management techniques to channel intensive development to areas outside of floodplains
- Integrates the goals, objectives, and activities from the HMP into existing jurisdictions regulatory documents and programs, where appropriate (including zoning ordinances, building codes, and land use policies)
- Evaluates and develops, as appropriate, a parking ordinance for emergency snow removal
- Develops model ordinance for sediment and erosion control, storm water control, stream corridor management, and other hazard preventative policies

### **Operational and Administration**

The Town of Genesee identified the following as operational and administration capabilities for the municipality:

- Conducts a tree pruning public awareness campaign
- Evaluates all critical and public structures and infrastructure within the floodplain and implements necessary improvements
- Monitors streams for ice jams
- Develops and implements maintenance programs to keep trees from threatening lives, property, and public infrastructure during storm events
- Promotes the development of systems/processes for cleaning and maintaining stream corridors
- Provides redundant utilities (such as backup electrical power and alternative communication methods) for designated emergency mass care shelters and other critical facilities (e.g., purchase back-up generators)
- Conducts discussions with utility service providers about working in conjunction with highway departments to expedite response to power failure
- Develops and implements programs to keep trees from threatening lives, property, and public infrastructure during storm events
- Examines feasibility of burying utility services in the Town
- Implements watershed management strategies that address needs at the watershed level, including cumulative flood mitigation activities and priorities
- Establishes a framework to compile and coordinate surface water management plans and data in the Town
- Enhances GIS coverage and analysis of existing and planned, future utility services in the Town
- Continues to develop inventory of at-risk buildings and infrastructure
- Maintains GIS data that would include buildings, roads, bridges, etc.
- Provides continued support of the Allegany County Hazard Planning Committee
- Encourages the maintenance of naturally controlling flood control mechanisms by developing and/or enforcing existing floodplain regulations
- Supports engineering studies and watershed assessments to encourage the reduction of flood exposure
- Identifies and addresses obstructions to surface water drainage



## **Funding**

The Town identified the following as funding capabilities:

- Identifies and pursues funding opportunities to develop and implement local and county mitigation actions
- Examines the costs of flood proofing utilities in flood-prone areas

## **Education and Outreach**

The Town of Genesee identified the following as education and outreach capabilities:

- Provides public outreach regarding winter weather events to its residents that includes: hazard preparedness; information regarding the location of shelters; safety tips on travel, unheated homes, and the use of portable and standby generators; fire hazards associated with space heaters; protecting plumbing during severe temperatures and managing through power failures; developing and distributing lists of materials needed for a 3-day emergency kit; keep citizens informed about what to do in case of water contamination; develop an outreach program to encourage homeowners to buy hazard insurance to protect belongings when feasible; disseminate important information regarding personal preparedness and disaster loss prevention; and develop a program to promote retrofits and safety precautions for mobile homes for flood and severe wind events
- Ensures that adequate shelter is available to community residents in the event that a hazard event causes displacement
- Conducts outreach to property owners and agencies regarding risk management associated with hazards
- Increases public awareness of storm mitigation activities, including storm warnings and advisories
- Prompts home owners to notify utility companies about trees that are threatening utility services and property

### **9.26.6 Mitigation Strategy and Prioritization**

This section discusses past mitigation actions and status, describes proposed hazard mitigation initiatives, and prioritization.

#### **Past Mitigation Initiative Status**

Table 9.26-11 indicates progress on the community's mitigation strategy identified in the 2011 HMP. Actions that are carried forward as part of this plan update are included in the following subsection in Table 9.26-12 with prioritization. Previous actions that are now on-going programs and capabilities are indicated as such in the Table 9.26-11 and in the Capability Assessment section.



Table 9.26-11. Past Mitigation Initiative Status

2011 Mitigation Action	Responsible Party	Status (In progress, No progress, Complete)	Describe Status 1. Please describe what was accomplished and indicate percent complete. 2. If there was no progress, indicate the obstacles/delays encountered. 3. If there was progress, how is/was the action being funded (e.g., FEMA HMGP grant, local budget)?	Next Step (Include in 2018 HMP as unique action, include in 2018 HMP as ongoing capability, or Discontinue)	Describe Next Step 1. If including action in the 2018 HMP, revise/reword to be more specific (as appropriate). Actions that are a regular part of the jurisdiction's operations should be listed as ongoing capabilities and not unique actions. 2. If discontinued, explain why.
Replace sluice pipes as identified with larger diameter sluice pipes.	Town of Genesee	100 percent Complete	Complete	Discontinue	Complete
Bridge replacement on Streeter Brook.	CDPW	100 percent Complete	Complete	Discontinue	Complete
Town barns sheet metal and lighting to retain heat and for safety.	Town of Genesee	In progress	Project is 50 percent complete	Include in 2018 HMP	Include in 2018 HMP
Tree pruning public awareness campaign.	Town of Genesee	Ongoing	Ongoing	Discontinue	Describe in the HMP as integrated into normal operations
Review existing local plans and efforts to ensure consistency with the County HMP's goals and objectives.	Hazard Mitigation Committee	Ongoing	Ongoing	Discontinue	Describe in the HMP as integrated into normal operations
Continue to inform citizens through various agencies and municipalities how to: Prepare for winter storm events. Location of shelters and tips for staying at home during a storm. Provide safety tips on travel, unheated homes, and the use of portable and standby generators, fire hazards associated with space heaters, protecting plumbing during severe temperatures and managing through a power failure, make available to citizens the FEMA "Are You Ready: A Guide to Citizen Preparedness." Develop and distribute a list of materials needed for an individual to survive for three (3) days without power. Keep citizens informed about what to do in case of water contamination (i.e., boiling water, bottled water facilities, etc.). Develop an outreach program to encourage homeowners to buy hazard insurance to protect belongings	FEMA	Ongoing	Ongoing	Discontinue	Describe in the HMP as integrated into normal operations



2011 Mitigation Action	Responsible Party	Status (In progress, No progress, Complete)	Describe Status 1. Please describe what was accomplished and indicate percent complete. 2. If there was no progress, indicate the obstacles/delays encountered. 3. If there was progress, how is/was the action being funded (e.g., FEMA HMGP grant, local budget)?	Next Step (Include in 2018 HMP as unique action, include in 2018 HMP as ongoing capability, or Discontinue)	Describe Next Step 1. If including action in the 2018 HMP, revise/reword to be more specific (as appropriate). Actions that are a regular part of the jurisdiction's operations should be listed as ongoing capabilities and not unique actions. 2. If discontinued, explain why.
when feasible. Disseminate important information regarding personal preparedness and disaster loss prevention. Develop a program to promote retrofits and safety precautions for mobile homes for flood and severe wind events.					
Facilitate the evaluation of all critical public structures and infrastructure within the floodplain and implement necessary improvements (i.e., relocation/elevation/flood-proofing needs).	Towns/ Villages DPW	Ongoing	Ongoing	Discontinue	Describe in the HMP as integrated into normal operations
Monitor streams for ice jams to minimize damage to infrastructure (bridges) and thereby reducing loss of lives.	Towns/ Villages DPW	Ongoing	Ongoing	Discontinue	Describe in the HMP as integrated into normal operations
Identify, evaluate and implement effective mitigation activities for repetitive loss properties within Allegany County.	DPW/NRCS SWCD HMC	Ongoing	Ongoing	Discontinue	Describe in the HMP as integrated into normal operations
Retrofit, acquire, and/or relocate buildings in flood-prone areas (including wet or dry flood proofing).	Towns/ Villages	None	No longer a priority	Discontinue	No longer a priority
Evaluate the adequacies of local storm sewer systems.	Towns Villages	None	No longer a priority	Discontinue	No longer a priority
Encourage development and enforcement of wind-resistant building sites and construction codes.	Local CEO Building Inspectors	Ongoing	Ongoing	Discontinue	Describe in the HMP as integrated into normal operations
Retrofit critical facilities with wind-resistant designs and construction.	Local CEO	None	No longer a priority	Discontinue	No longer a priority
Develop and implement maintenance programs to keep trees from threatening lives, property, and public infrastructure during storm events.	Public Utilities DPW Towns/Villages	Ongoing	Ongoing	Discontinue	Describe in the HMP as integrated into normal operations
Promote the development of systems/processes for cleaning and maintaining stream corridors.	Towns/Villages SWCD/DPW DEC	Ongoing	Ongoing	Discontinue	Describe in the HMP as integrated into normal operations



2011 Mitigation Action	Responsible Party	Status (In progress, No progress, Complete)	Describe Status			Next Step (Include in 2018 HMP as unique action, include in 2018 HMP as ongoing capability, or Discontinue)	Describe Next Step 1. If including action in the 2018 HMP, revise/reword to be more specific (as appropriate). Actions that are a regular part of the jurisdiction's operations should be listed as ongoing capabilities and not unique actions. 2. If discontinued, explain why.
			1. Please describe what was accomplished and indicate percent complete.	2. If there was no progress, indicate the obstacles/delays encountered.	3. If there was progress, how is/ was the action being funded (e.g., FEMA HMGP grant, local budget)?		
Retrofit critical facilities to increase resistance to storm hazards and promote hazard resistance, e.g. retrofit or reconstruct at-risk bridges at a higher elevation to withstand flood events.	DPW Local CEO	None	No longer a priority			Discontinue	No longer a priority
Provide redundant utilities (such as backup electrical power and alternative communication methods) for designated emergency mass care shelters and other critical facilities, e.g. purchase back-up generators.	American Red Cross OEM (coordinating) Towns/Villages School Districts	Ongoing	Ongoing			Discontinue	Include in "Purchase and install backup generators at critical facilities in the Town"
Obtain funding to purchase backup generators and other redundant utilities for critical assets that require such emergency power sources.	Towns/Villages Local Agencies	In Progress	Ongoing			Include in 2018 HMP	Include in "Purchase and install backup generators at critical facilities in the Town"
Identify and pursue funding opportunities to develop and implement local and County mitigation actions.	HMC	Ongoing	Ongoing			Discontinue	Describe in the HMP as integrated into normal operations
Conduct discussions with utility service providers about working in conjunction with highway departments to expedite response to power failure.	DPW Towns/Villages As applicable	Ongoing	Ongoing			Discontinue	Describe in the HMP as integrated into normal operations
Work with public water suppliers on hazard mitigation and emergency response plans.	SWCD/DOH DEC Towns/Villages	Ongoing	Ongoing			Discontinue	Describe in the HMP as integrated into normal operations
Continue public support of communication and collaboration between County and municipalities. Promote the public's involvement/input into the County and municipal process.	HMC	Ongoing	Ongoing			Discontinue	Describe in the HMP as integrated into normal operations
Maintain communication and cooperation to improve relationship between County and local public works and highway departments for efficient emergency response.	DPW 9-1-1 Coordinator	Ongoing	Ongoing			Discontinue	Describe in the HMP as integrated into normal operations
Examine the costs of flood proofing utilities in flood-prone areas.	Towns/Villages	Ongoing	Ongoing			Discontinue	Describe in the HMP as integrated into normal operations



2011 Mitigation Action	Responsible Party	Status (In progress, No progress, Complete)	Describe Status 1. Please describe what was accomplished and indicate percent complete. 2. If there was no progress, indicate the obstacles/delays encountered. 3. If there was progress, how is/was the action being funded (e.g. FEMA HMGP grant, local budget)?	Next Step (Include in 2018 HMP as unique action, include in 2018 HMP as ongoing capability, or Discontinue)	Describe Next Step 1. If including action in the 2018 HMP, revise/reword to be more specific (as appropriate). Actions that are a regular part of the jurisdiction's operations should be listed as ongoing capabilities and not unique actions. 2. If discontinued, explain why.
Develop and implement programs to keep trees from threatening lives, property, and public infrastructure during storm events.	DPW Towns/Villages	Ongoing	Ongoing	Discontinue	Describe in the HMP as integrated into normal operations
Examine feasibility of burying utility services in villages that own or maintain a sub-station and retrofit existing overhead lines to underground line.	Villages HMC Coordinating	Ongoing	Ongoing	Discontinue	Describe in the HMP as integrated into normal operations
Identify existing repaired stream banks and protect them.	SWCD DPW Towns/Villages	None	No longer a priority	Discontinue	No longer a priority
Implement watershed management strategies that address needs at the watershed level, including cumulative flood mitigation activities and priorities.	SWCD DPW Towns/Villages Private Citizens	Ongoing	Ongoing	Discontinue	Describe in the HMP as integrated into normal operations
Conduct a mailing to property owners in the 100- and 500-year flood plains.	Towns/Villages OEM Coordinating	None	No longer a priority	Discontinue	No longer a priority
Ensure that adequate shelter is available to community residents in the event that a hazard event causes displacement.	Red Cross Health Dpt.	Ongoing	Ongoing	Discontinue	Describe in the HMP as integrated into normal operations
Conduct outreach to property owners and agencies regarding risk management associated with hazards.	OEM (coordinating)	Ongoing	Ongoing	Discontinue	Describe in the HMP as integrated into normal operations
Increase public awareness of storm mitigation activities, including storm warnings and advisories.	OEM	Ongoing	Ongoing	Discontinue	Describe in the HMP as integrated into normal operations
Prompt home owners to notify utility companies about trees that are threatening utility services and property.	Utilities OEM	Ongoing	Ongoing	Discontinue	Describe in the HMP as integrated into normal operations
Develop and implement programs to coordinate maintenance and mitigation activities to reduce risk to public infrastructure from severe winter storms.	DPW Towns/Villages	Ongoing	Ongoing	Discontinue	Describe in the HMP as integrated into normal operations
Identify or update existing land use in major stream corridors and floodplains in Allegany County.	TBD	Ongoing	Ongoing	Discontinue	Describe in the HMP as integrated into normal operations



2011 Mitigation Action	Responsible Party	Status (In progress, No progress, Complete)	Describe Status 1. Please describe what was accomplished and indicate percent complete. 2. If there was no progress, indicate the obstacles/delays encountered. 3. If there was progress, how is/was the action being funded (e.g., FEMA HMGP grant, local budget)?	Next Step (Include in 2018 HMP as unique action, include in 2018 HMP as ongoing capability, or Discontinue)	Describe Next Step 1. If including action in the 2018 HMP, revise/reword to be more specific (as appropriate). Actions that are a regular part of the jurisdiction's operations should be listed as ongoing capabilities and not unique actions. 2. If discontinued, explain why.
Establish a framework to compile and coordinate surface water management plans and data across the County.	Towns/Villages SWCD DPW 9-1-1 Coordinator	Ongoing	Ongoing	Discontinue	Describe in the HMP as integrated into normal operations
Enhance GIS coverage and analysis of existing and planned future utility services in the County.	Utility Companies	Ongoing	Ongoing	Discontinue	Describe in the HMP as integrated into normal operations
Continue to develop inventory of at-risk buildings and infrastructure.	Towns/Villages HMC	Ongoing	Ongoing	Discontinue	Describe in the HMP as integrated into normal operations
Maintain GIS data that would include buildings, roads, bridges, etc.	DPW SWCD	Ongoing	Ongoing	Discontinue	Describe in the HMP as integrated into normal operations
Support future hazard mitigation planning.	HMC	Ongoing	Ongoing	Discontinue	Describe in the HMP as integrated into normal operations
Provide information to Emergency Management webpage for Allegany County; providing information for public officials, emergency responders, and residents.	HMC OEM	None	No longer a priority	Discontinue	No longer a priority
Develop more comprehensive data of potential wildfire areas within Allegany County.	Towns/Villages SWCD OEM	None	No longer a priority	Discontinue	No longer a priority
Identify and plan for use of backup water supply for public water systems should the primary water supply become contaminated or compromised.	Towns/Villages DOH	None	No longer a priority	Discontinue	No longer a priority
Continue use of the NYSDEC's Stormwater Management Manual to minimize the impact of future land use changes.	CEO Towns/Villages SWCD/DPW All Municipal Entities	Ongoing	Ongoing	Discontinue	Describe in the HMP as integrated into normal operations
Develop/enhance procedures for testing and sampling the water supply and a warning system should any tests reveal contamination.	Towns/Villages DOH	None	No longer a priority	Discontinue	No longer a priority



2011 Mitigation Action	Responsible Party	Status (In progress, No progress, Complete)	Describe Status 1. Please describe what was accomplished and indicate percent complete. 2. If there was no progress, indicate the obstacles/delays encountered. 3. If there was progress, how is/was the action being funded (e.g., FEMA HMGP grant, local budget)?	Next Step (Include in 2018 HMP as unique action, include in 2018 HMP as ongoing capability, or Discontinue)	Describe Next Step 1. If including action in the 2018 HMP, revise/reword to be more specific (as appropriate). Actions that are a regular part of the jurisdiction's operations should be listed as ongoing capabilities and not unique actions. 2. If discontinued, explain why.
Develop water vulnerability assessments (VA) for water supply and water treatment systems and make improvements to harden security and ensure that appropriate emergency plans are in place.	DOH SWCD DEC	None	No longer a priority	Discontinue	No longer a priority
Identify appropriate protection measures for groundwater and public drinking water systems.	Towns/Villages DOH	Ongoing	Ongoing	Discontinue	Describe in the HMP as integrated into normal operations
Continue support of the Allegany County Hazard Planning Committee.	Board of Legislators	Ongoing	Ongoing	Discontinue	Describe in the HMP as integrated into normal operations
Encourage the maintenance of naturally controlling flood control mechanisms by developing and/or enforcing existing floodplain regulations.	TBD	Ongoing	Ongoing	Discontinue	Describe in the HMP as integrated into normal operations
Develop model ordinance for sediment and erosion control, storm water control, stream corridor management, and other hazard preventative policy.	TBD	Ongoing	Ongoing	Discontinue	Describe in the HMP as integrated into normal operations
Evaluate and develop, as appropriate, a parking ordinance for emergency snow removal.	Towns/Villages	Ongoing	Ongoing	Discontinue	Describe in the HMP as integrated into normal operations
Integrate the goals, objectives, and activities from this plan into existing jurisdictions and county regulatory documents and programs, where appropriate (including zoning ordinances, building codes, and land use policies).	County-wide	Ongoing	Ongoing	Discontinue	Describe in the HMP as integrated into normal operations
Wherever practicable, use zoning and other growth management techniques to channel intensive development to areas outside of floodplains.	Towns/Villages CEO	Ongoing	Ongoing	Discontinue	Describe in the HMP as integrated into normal operations
Support engineering studies and watershed assessments to encourage the reduction of flood exposure.	TBD	Ongoing	Ongoing	Discontinue	Describe in the HMP as integrated into normal operations



2011 Mitigation Action	Responsible Party	Status (In progress, No progress, Complete)	Describe Status 1. Please describe what was accomplished and indicate percent complete. 2. If there was no progress, indicate the obstacles/delays encountered. 3. If there was progress, how is/was the action being funded (e.g., FEMA HMGP grant, local budget)?	Next Step (Include in 2018 HMP as unique action, include in 2018 HMP as ongoing capability, or Discontinue)	Describe Next Step 1. If including action in the 2018 HMP, revise/reword to be more specific (as appropriate). Actions that are a regular part of the jurisdiction's operations should be listed as ongoing capabilities and not unique actions. 2. If discontinued, explain why.
Identify and address obstructions to surface water drainage.	Towns/Villages	Ongoing	Ongoing	Discontinue	Describe in the HMP as integrated into normal operations
Limit to the extent practicable, development within floodplain areas to avoid degradation of their capacity to control flood levels and reduce potential future losses due to flooding.	Towns/Villages CEO	Ongoing	Ongoing	Discontinue	Describe in the HMP as integrated into normal operations
Ensure that property development that occurs within the floodplain areas is constructed to be flood proof, to the extent possible.	Towns/Villages CEO	Ongoing	Ongoing	Discontinue	Describe in the HMP as integrated into normal operations



### **Completed Mitigation Initiatives Not Identified in the Previous Mitigation Strategy**

The Town of Genesee identified the following mitigation projects/activities as completed but not identified in the previous mitigation strategy in the 2011 Plan:

- None

### **Proposed Hazard Mitigation Initiatives for the Plan Update**

Table 9.26-12 summarizes the comprehensive range of specific mitigation initiatives the Town of Genesee would like to pursue to reduce the effects of hazards. Some of these initiatives may be previous actions carried forward for this plan update. These initiatives depend on available funding (grants and local match availability) and may be modified or omitted at any time based on if there are new hazards and changes in municipal priorities. Both the four FEMA mitigation action categories and the six CRS mitigation action categories are listed in the Table 9.26-12 to further demonstrate the wide-range of activities and mitigation measures selected.

As discussed in Section 6, 14 evaluation/prioritization criteria are used to complete the prioritization of mitigation initiatives. For each new mitigation action, a numeric rank is assigned (-1, 0, or 1) for each of the 14 evaluation criteria to assist with prioritizing your actions as High, Medium, or Low. Table 9.26-13 summarizes the evaluation of each mitigation initiative, listed by Action Number.

Table 9.26-13 provides a summary of the prioritization of all proposed mitigation initiatives for the plan update.



Table 9.26-12. Proposed Hazard Mitigation Initiatives

Initiative	Mitigation Initiative	Applies to New and/or Existing Structures*	Hazards Mitigated	Goals Met	Lead and Support Agencies	Estimated Benefits	Estimated Cost	Sources of Funding	Timeline	Priority	FEMA Mitigation Category	CRS Category
TGe-1	Town barns sheet metal and lighting to retain heat and for safety.	Existing	All	1, 2, 3	Town	High	Medium	Operating budget; Grants where available	Short Term / DOF	High	SIP	PP, ES
TGe-2	Purchase and install backup generator at Town Hall.	Existing	All	1, 2, 3	Town	High	Medium	Operating budget; Grants where available	Short Term / DOF	High	SIP	PP, ES
TGe-3	Update the flood damage prevention ordinance.	New	Flood	1	Town Board	High	Low	Operating Budget	Short Term	Medium	LPR	PR
TGe-4	Send local Floodplain Administrator to County and State trainings and complete certification programs related to floodplain management.	N/A	Flood, Severe Storm, Severe Winter Storm, Dam Failure, Levee Failure	2, 3	Town Floodplain Administrator	Medium	Low	FEMA (HMGP, FMA, PDM), CDBG	Short Term	Medium	EAP	PR
TGe-5	Purchase and install backup generator at Highway Department.	Existing	All	1, 2, 3	Town	High	Medium	Operating budget; Grants where available	Short Term / DOF	High	SIP	PP, ES
TGe-6	Complete public outreach regarding landslides to homeowners, instructing what to watch for on steep slopes and possible mitigation actions that can be taken.	N/A	Landslide	1	Town	Medium	Low	Operating budget	Short Term	Medium	EAP	PI

## Notes:

Not all acronyms and abbreviations defined below are included in the table.

\*Does this mitigation initiative reduce the effects of hazards on new and/or existing buildings and/or infrastructure? Not applicable (N/A) is inserted if this does not apply.

## Acronyms and Abbreviations:

CAV Community Assistance Visit  
CRS Community Rating System  
DPW Department of Public Works

## Potential FEMA HMA Funding Sources:

CDBG Community Development Block Grant  
FMA Flood Mitigation Assistance Grant Program  
HMGP Hazard Mitigation Grant Program

## Timeline:

Short Term 1 to five (5) years  
Long Term five (5) years or greater  
OG On-going program



Acronyms and Abbreviations:

FEMA	Federal Emergency Management Agency
FPA	Floodplain Administrator
HMA	Hazard Mitigation Assistance
N/A	Not applicable
NFIP	National Flood Insurance Program
OEM	Office of Emergency Management and Fire

Potential FEMA HMA Funding Sources:

PDM	Pre-Disaster Mitigation Grant Program
RFC	Repetitive Flood Claims Grant Program (discontinued)
SRL	Severe Repetitive Loss Grant Program (discontinued)

Timeline:

DOF	Depending on funding
-----	----------------------

Costs:

Where actual project costs have been reasonably estimated:

Low	< \$10,000
Medium	\$10,000 to \$100,000
High	> \$100,000

Where actual project costs cannot reasonably be established at this time:

Low	Possible to fund under existing budget. Project is part of, or can be part of an existing on-going program.
Medium	Could budget for under existing work plan, but would require a reapportionment of the budget or a budget amendment, or the cost of the project would have to be spread over multiple years.
High	Would require an increase in revenue via an alternative source (i.e., bonds, grants, fee increases) to implement. Existing funding levels are not adequate to cover the costs of the proposed project.

Benefits:

Where possible, an estimate of project benefits (per FEMA's benefit calculation methodology) has been evaluated against the project costs, and is presented as:

Low=	< \$10,000
Medium	\$10,000 to \$100,000
High	> \$100,000

Where numerical project benefits cannot reasonably be established at this time:

Low	Long-term benefits of the project are difficult to quantify in the short term.
Medium	Project will have a long-term impact on the reduction of risk exposure to life and property, or project will provide an immediate reduction in the risk exposure to property.
High	Project will have an immediate impact on the reduction of risk exposure to life and property.

Mitigation Category:

- **Local Plans and Regulations (LPR)** – These actions include government authorities, policies or codes that influence the way land and buildings are being developed and built.
- **Structure and Infrastructure Project (SIP)** – These actions involve modifying existing structures and infrastructure to protect them from a hazard or remove them from a hazard area. This could apply to public or private structures and critical facilities and infrastructure. This type of action also involves projects to construct manmade structures to reduce the impact of hazards.
- **Natural Systems Protection (NSP)** – These are actions that minimize damage and losses, and also preserve or restore the functions of natural systems.
- **Education and Awareness Programs (EAP)** – These are actions to inform and educate citizens, elected officials, and property owners about hazards and potential ways to mitigate them. These actions may also include participation in national programs, such as StormReady and Firewise Communities

CRS Category:

- **Preventative Measures (PR)** – Government, administrative or regulatory actions, or processes that influence the way land and buildings are developed and built. Examples include planning and zoning, floodplain local laws, capital improvement programs, open space preservation, and storm water management regulations.
- **Property Protection (PP)** – These actions include public activities to reduce hazard losses or actions that involve (1) modification of existing buildings or structures to protect them from a hazard or (2) removal of the structures from the hazard area. Examples include acquisition, elevation, relocation, structural retrofits, storm shutters, and shatter-resistant glass.
- **Public Information (PI)** – Actions to inform and educate citizens, elected officials, and property owners about hazards and potential ways to mitigate them. Such actions include outreach projects, real estate disclosure, hazard information centers, and educational programs for school-age children and adults.
- **Natural Resource Protection (NR)** – Actions that minimize hazard loss and also preserve or restore the functions of natural systems. These actions include sediment and erosion control, stream corridor restoration, watershed management, forest and vegetation management, and wetland restoration and preservation.



- Structural Flood Control Projects (SP) – Actions that involve the construction of structures to reduce the impact of a hazard. Such structures include dams, setback levees, floodwalls, retaining walls, and safe rooms.
- Emergency Services (ES) – Actions that protect people and property during and immediately following a disaster or hazard event. Services include warning systems, emergency response services, and the protection of essential facilities



Table 9.26-13. Summary of Prioritization of Actions

Mitigation Action / Project Number	Mitigation Action/Initiative	Life Safety	Property Protection	Cost-Effectiveness	Technical	Political	Legal	Fiscal	Environmental	Social	Administrative	Multi-Hazard	Timeline	Agency Champion	Other Community Objectives	Total	High / Medium / Low
TGe-1	Town barns sheet metal and lighting to retain heat and for safety.	1	1	1	1	1	0	0	0	0	1	1	0	1	0	8	High
TGe-2	Purchase and install backup generators at Town Hall.	1	1	1	1	1	0	0	0	1	1	1	0	1	0	9	High
TGe-3	Update the flood damage prevention ordinance. Send local Floodplain Administrator to County and State trainings and complete certification programs related to floodplain management.	1	1	1	1	0	0	0	0	0	1	1	0	1	0	7	Medium
TGe-4	Purchase and install backup generators at Highway Department.	1	1	1	1	0	0	0	0	0	1	1	0	1	0	7	Medium
TGe-5	Complete public outreach regarding landslides to homeowners, instructing what to watch for on steep slopes and possible mitigation actions that can be taken.	1	1	1	0	1	0	0	0	1	1	1	0	1	0	9	High
TGe-6		1	1	1	0	1	0	0	0	1	1	0	1	1	0	8	Medium

Note: Section 6 contains the guidance on conducting the prioritization of mitigation actions.



---

**9.26.7 Future Needs To Better Understand Risk/Vulnerability**

---

None at this time.

---

**9.26.8 Hazard Area Extent and Location**

---

Hazard area extent and location maps were generated for the Town of Genesee that illustrate the probable areas impacted in the municipality. These maps are based on the best available current data, and are considered adequate for planning. Maps have only been generated for those hazards (i.e., landslide, wildfire, and flooding) that can be clearly identified using mapping techniques and technologies, and for which the Town of Genesee has significant exposure. These maps are provided below.

---

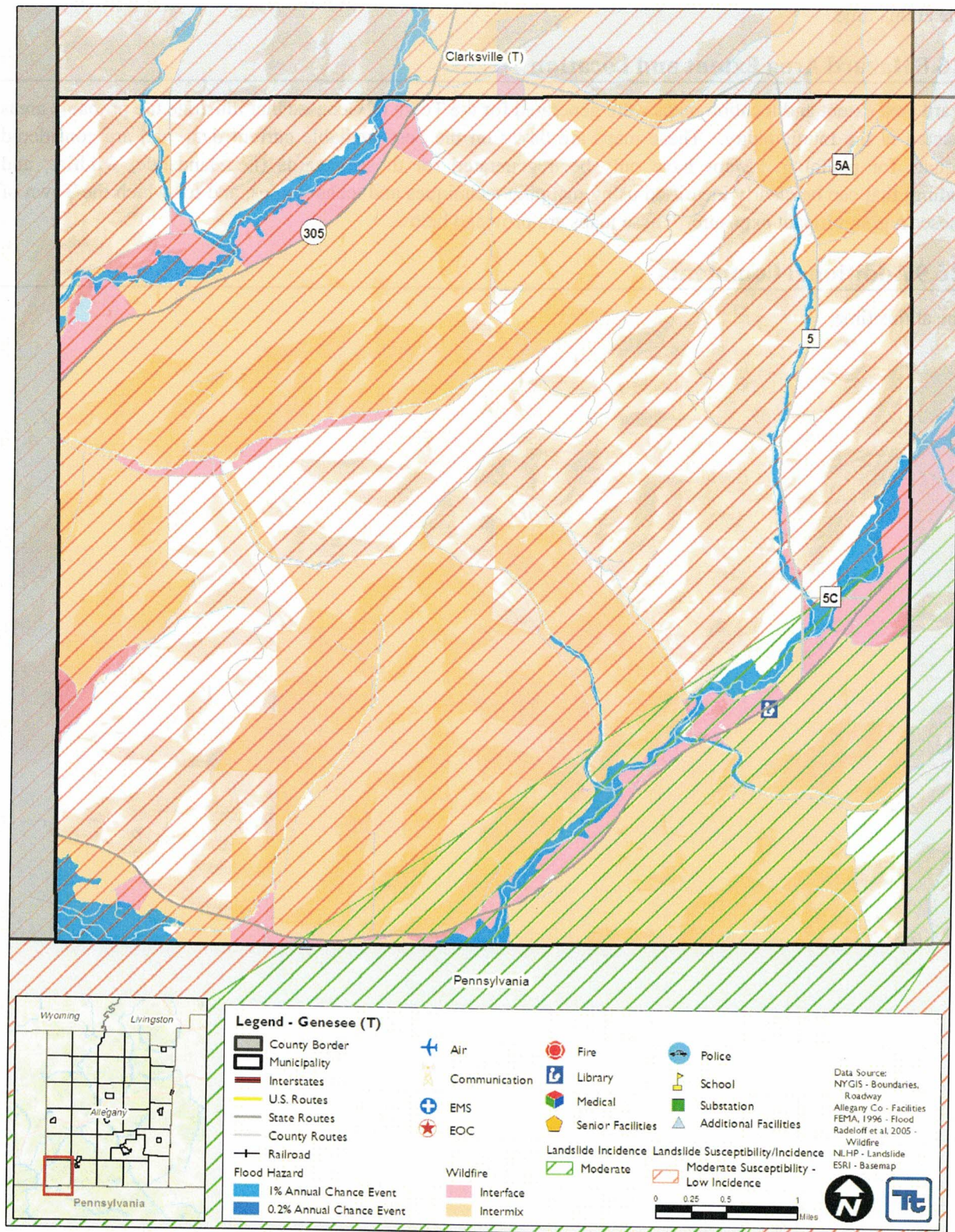
**9.26.9 Additional Comments**

---

None at this time.



**Figure 9.26-1. Town of Genesee Flood, Landslide, and Wildfire Hazard Area Extent and Location Map**





Action Number:

TGe-1

Mitigation Action/Initiative:

Town barns sheet metal and lighting to retain heat and for safety.

Assessing the Risk	
Hazard(s) addressed:	Winter storm.
Specific problem being mitigated:	Town barns do not retain heat and in need of proper lighting. Lack of heat could degrade performance of Town equipment that is used to respond to winter storms. The Town needs to ensure that the facility is safe for staff to be able to respond to winter storm events.
Evaluation of Potential Actions/Projects	
Actions/Projects Considered (name of project and reason for not selecting):	Do nothing – current problem continues Build new facility – cost prohibitive
Action/Project Intended for Implementation	
Description of Selected Action/Project	Add sheet metal and lighting to the town barns to retain heat and provide safety.
Action/Project Category	SIP
Goals Met	1, 2, 3
Applies to existing and or new development, or not applicable	Existing
Benefits (losses avoided)	High
Estimated Cost	Medium
Priority*	High
Plan for Implementation	
Responsible Organization	Town
Local Planning Mechanism	Hazard Mitigation
Potential Funding Sources	Operating budget; grants where available
Timeline for Completion	Short Term / DOF
Reporting on Progress	
Date of Status Report/ Report of Progress	Date: Progress on Action/Project:



Action Number:

TGe-1

Mitigation Action/Initiative:

Town barns sheet metal and lighting to retain heat and for safety.

Criteria	Numeric Rank (-1, 0, 1)	Provide brief rationale for numeric rank when appropriate
Life Safety	1	Provide safety to town employees
Property Protection	1	Allow buildings to retain heat properly
Cost-Effectiveness	1	
Technical	1	
Political	1	
Legal	0	
Fiscal	0	Need to seek grant funding or use operating budget
Environmental	0	
Social	0	
Administrative	1	
Multi-Hazard	1	
Timeline	0	
Agency Champion	1	
Other Community Objectives	0	
Total	8	
Priority (High/Med/Low)	High	



Action Number:

TGe-2

Mitigation Action/Initiative:

Purchase and install backup generator at Town Hall.

Assessing the Risk	
Hazard(s) addressed:	All
Specific problem being mitigated:	Lack of backup power at the village critical facilities
Evaluation of Potential Actions/Projects	
Actions/Projects Considered (name of project and reason for not selecting):	Do nothing – current problem continues Solar panels- cost and weather dependent
Action/Project Intended for Implementation	
Description of Selected Action/Project	Purchase and install backup generator at Town Hall to ensure uninterrupted power to critical components.
Action/Project Category	SIP
Goals Met	1, 2, 3
Applies to existing and or new development, or not applicable	Existing
Benefits (losses avoided)	High
Estimated Cost	Medium
Priority*	High
Plan for Implementation	
Responsible Organization	Village
Local Planning Mechanism	Hazard Mitigation, Operating Budget
Potential Funding Sources	Grant funding with local cost share (where available); operating budget
Timeline for Completion	Short Term / DOF
Reporting on Progress	
Date of Status Report/ Report of Progress	Date: Progress on Action/Project:



Action Number:

TGe-2

Mitigation Action/Initiative:

Purchase and install backup generator at Town Hall.

Criteria	Numeric Rank (-1, 0, 1)	Provide brief rationale for numeric rank when appropriate
Life Safety	1	
Property Protection	1	Allow village critical facilities to function during periods of utility outages
Cost-Effectiveness	1	
Technical	1	
Political	1	
Legal	0	
Fiscal	0	Need to seek grant funding or use operating budget
Environmental	0	
Social	1	
Administrative	1	
Multi-Hazard	1	All hazards
Timeline	0	
Agency Champion	1	
Other Community Objectives	0	
Total	9	
Priority (High/Med/Low)	High	



Action Number:

TGe-5

Mitigation Action/Initiative:

Purchase and install backup generator at Highway Department.

Assessing the Risk	
Hazard(s) addressed:	All
Specific problem being mitigated:	Lack of backup power at the village critical facilities
Evaluation of Potential Actions/Projects	
Actions/Projects Considered (name of project and reason for not selecting):	Do nothing – current problem continues Solar panels- cost and weather dependent
Action/Project Intended for Implementation	
Description of Selected Action/Project	Purchase and install backup generator at Highway Department to ensure uninterrupted power to critical components.
Action/Project Category	SIP
Goals Met	1, 2, 3
Applies to existing and or new development, or not applicable	Existing
Benefits (losses avoided)	High
Estimated Cost	Medium
Priority*	High
Plan for Implementation	
Responsible Organization	Village
Local Planning Mechanism	Hazard Mitigation, Operating Budget
Potential Funding Sources	Grant funding with local cost share (where available); operating budget
Timeline for Completion	Short Term / DOF
Reporting on Progress	
Date of Status Report/ Report of Progress	Date: Progress on Action/Project:



Action Number:

TGe-5

Mitigation Action/Initiative:

Purchase and install backup generator at Highway Department.

Criteria	Numeric Rank (-1, 0, 1)	Provide brief rationale for numeric rank when appropriate
Life Safety	1	
Property Protection	1	Allow village critical facilities to function during periods of utility outages
Cost-Effectiveness	1	
Technical	1	
Political	1	
Legal	0	
Fiscal	0	Need to seek grant funding or use operating budget
Environmental	0	
Social	1	
Administrative	1	
Multi-Hazard	1	All hazards
Timeline	0	
Agency Champion	1	
Other Community Objectives	0	
Total	9	
Priority (High/Med/Low)	High	